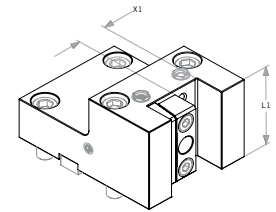
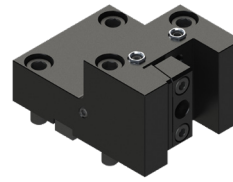


BMT65 Standard Tool Holder Blocks

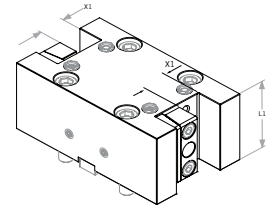
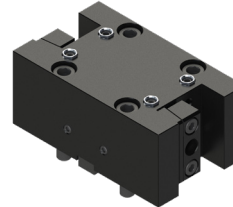
Turning Tool Holder - Standard*

| Turret | Part Number | X1 | L1 |
|--------|-----------------------------|------|------|
| BMT65 | RB65OD100 | 1.00 | 2.76 |
| BMT65 | RB65MOD25MM | 25MM | 70MM |



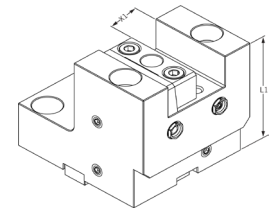
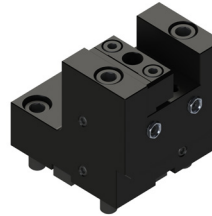
Double Sided Turning Tool Holder - Standard*

| Turret | Part Number | X1 | L1 |
|--------|-------------------------------|------|------|
| BMT65 | RB65OD100DS | 1.00 | 2.76 |
| BMT65 | RB65MOD25MMDS | 25MM | 70MM |



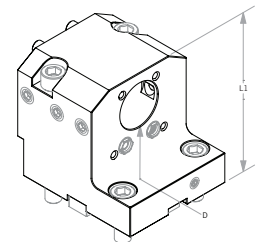
Face Groove Holders

| Turret | Part Number | X1 | L1 |
|--------|----------------------------|------|------|
| BMT65 | RB65ODF100 | 1.00 | 3.66 |



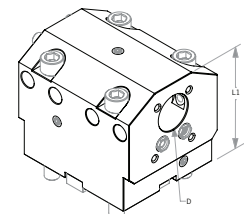
Boring Bar Holder - Standard**

| Turret | Part Number | D | L1 |
|--------|-----------------------------|------|-------|
| BMT65 | RB65ID100 | 1.00 | 3.94 |
| BMT65 | RB65ID150 | 1.50 | 3.94 |
| BMT65 | RB65MID25MM | 25MM | 100MM |
| BMT65 | RB65MID40MM | 40MM | 100MM |



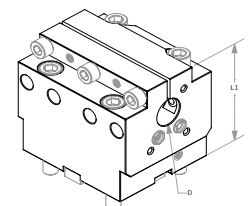
Double Sided Boring Bar Holder - Standard**

| Turret | Part Number | D | L1 |
|--------|-------------------------------|------|-------|
| BMT65 | RB65ID125DS | 1.25 | 3.94 |
| BMT65 | RB65MID32MMDS | 32MM | 100MM |



Split Block Boring Bar Holder - Standard**

| Turret | Part Number | D | L1 |
|--------|-------------------------------|------|----------|
| BMT65 | RB65ID100SP | 1.00 | 4.15 |
| BMT65 | RB65ID150SP | 1.50 | 4.41 |
| BMT65 | RB65ID200SP | 2.00 | 4.67 |
| BMT65 | RB65MID25MMSP | 25MM | 105.50MM |
| BMT65 | RB65MID40MMSP | 40MM | 112MM |
| BMT65 | RB65MID50MMSP | 50MM | 118.50MM |



Coolant Option: **Internal Coolant*** Coolant Option: **Internal Coolant/External Coolant****